

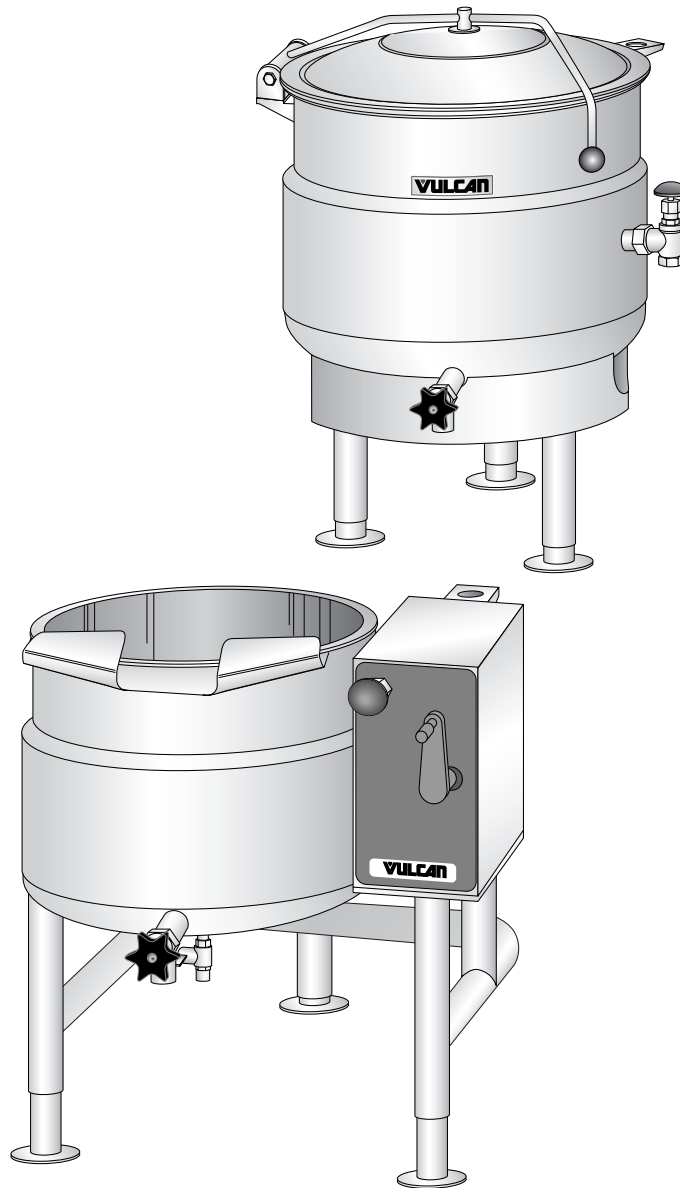
VULCAN

CATALOG OF REPLACEMENT PARTS

DIRECT STEAM 2/3 JACKETED STATIONARY AND TILTING KETTLES

MODELS

<i>K20DL</i>	<i>ML-136081</i>
<i>K20DLT</i>	<i>ML-136086</i>
<i>K40DL</i>	<i>ML-136082</i>
<i>K40DLT</i>	<i>ML-136087</i>
<i>K60DL</i>	<i>ML-136083</i>
<i>K60DLT</i>	<i>ML-136088</i>



For additional information on Vulcan-Hart or to locate an authorized parts and service provider in your area, visit our website at www.vulcanequipment.com.

TABLE OF CONTENTS

K20DL, K40DL, AND K60DL COMPLETE ASSEMBLY – EXPLODED VIEW 4

K20DL, K40DL, AND K60DL COMPLETE ASSEMBLY PARTS LIST 5

K20DLT, K40DLT, AND K60DLT – EXPLODED VIEW 6

K20DLT, K40DLT, AND K60DLT COMPLETE ASSEMBLY PARTS LIST 7

OPTIONAL SPRING ASSIST COVER FOR TILTING KETTLES – EXPLODED VIEW 8

OPTIONAL SPRING ASSIST COVER PARTS LIST 9

2" DRAW-OFF VALVE 10

3" COMPRESSION VALVE 11

K20DL, K40DL, AND K60DL COMPLETE ASSEMBLY – EXPLODED VIEW

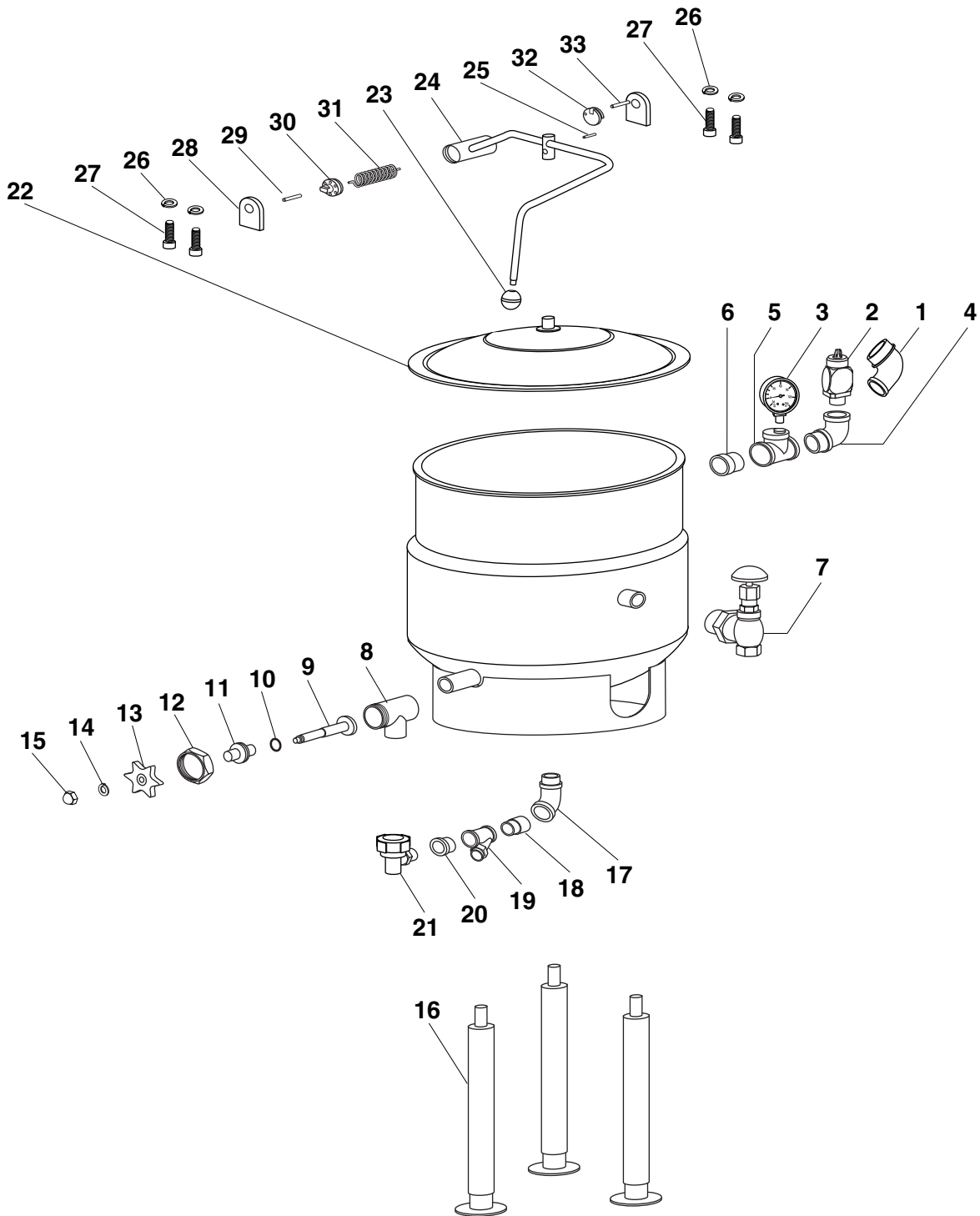


Figure 1

K20DL, K40DL, AND K60DL COMPLETE ASSEMBLY PARTS LIST

Fig. 1 Item No.	Part No.	Description	Amt
1	FP-015-17	Elbow, Pipe 1/2 X 90 Degree Street	1
2	00-855968-00001	Valve, Relief	1
3	00-855954-00001	Gauge, Pressure	1
4	FP-015-17	Elbow, Pipe 1/2 X 90 Degree Street	1
5	FP-069-06	Tee, Pipe, 1/2 X 1/2 X 1/4	1
6	FP-040-42	Pipe, 1/2 X 1.125	1
7	00-881984-00001	Valve, Steam Inlet	1
8*	00-856213-00002	Valve Body	1
9*	00-856213-00003	Disc and Stem Assembly	1
10*	00-856213-00007	O-ring	1
11*	00-856213-00006	Retainer	1
12*	00-856213-00004	Hex Nut	1
13*	00-856213-00005	Handle	1
14*	00-856213-00009	Lock Washer	1
15*	00-856213-00008	Acorn Nut	1
16	00-856977-00001	Leg and Flange Foot	3
17	FP-015-24	Elbow, Pipe 3/4 X 90 Degree Street	1
18	FP-042-50	Pipe, 1/2 X 2.000	1
19	00-909459	Strainer, 3/4 Cast Bronze	1
20	FP-027-22	Bushing, Pipe 3/4 X 1/2	1
21	00-856329-00001	Trap, Thermostatic 125 PSI	1
22	00-856490-00002	Assembly, Lid 20 Gal Without Condensate Ring	1
	00-856495-00002	Assembly, Lid 40 Gal Without Condensate Ring	1
	00-856500-00002	Assembly, Lid 60 Gal Without Condensate Ring	1
23	00-853285-1	Knob, Press On	1
24	00-856486-00001	Handle and Rocker Housing Assembly K20DL	1
	00-856491-00001	Handle and Rocker Housing Assembly K40DL	1
	00-856496-00001	Handle and Rocker Housing Assembly K60DL	1
25	RP-004-31	Pin, Roll .250 X 1.000	1
26	WL-006-17	Washer, Lock, Helical 1/4	4
27	SC-110-98	Screw, Cap 1/4-20 X 3/4 SST	4
28	00-853286-1	Plate, Front	1
29	00-853284-1	Pin, Lock	1
30	00-853292-1	Disc, Tension, Adjustment	1
31	00-853289-00001	Spring, Torsion	1
32	00-853293-00001	Disc, Rotary Stop	1
33	00-855220-00002	Plate, Rear	1
NS	00-833652-00001	Petro-Gel (Tube)	1

* Items 8 through 15 comprise the 3" Compression Valve. See page 8.

K20DLT, K40DLT, AND K60DLT – EXPLODED VIEW

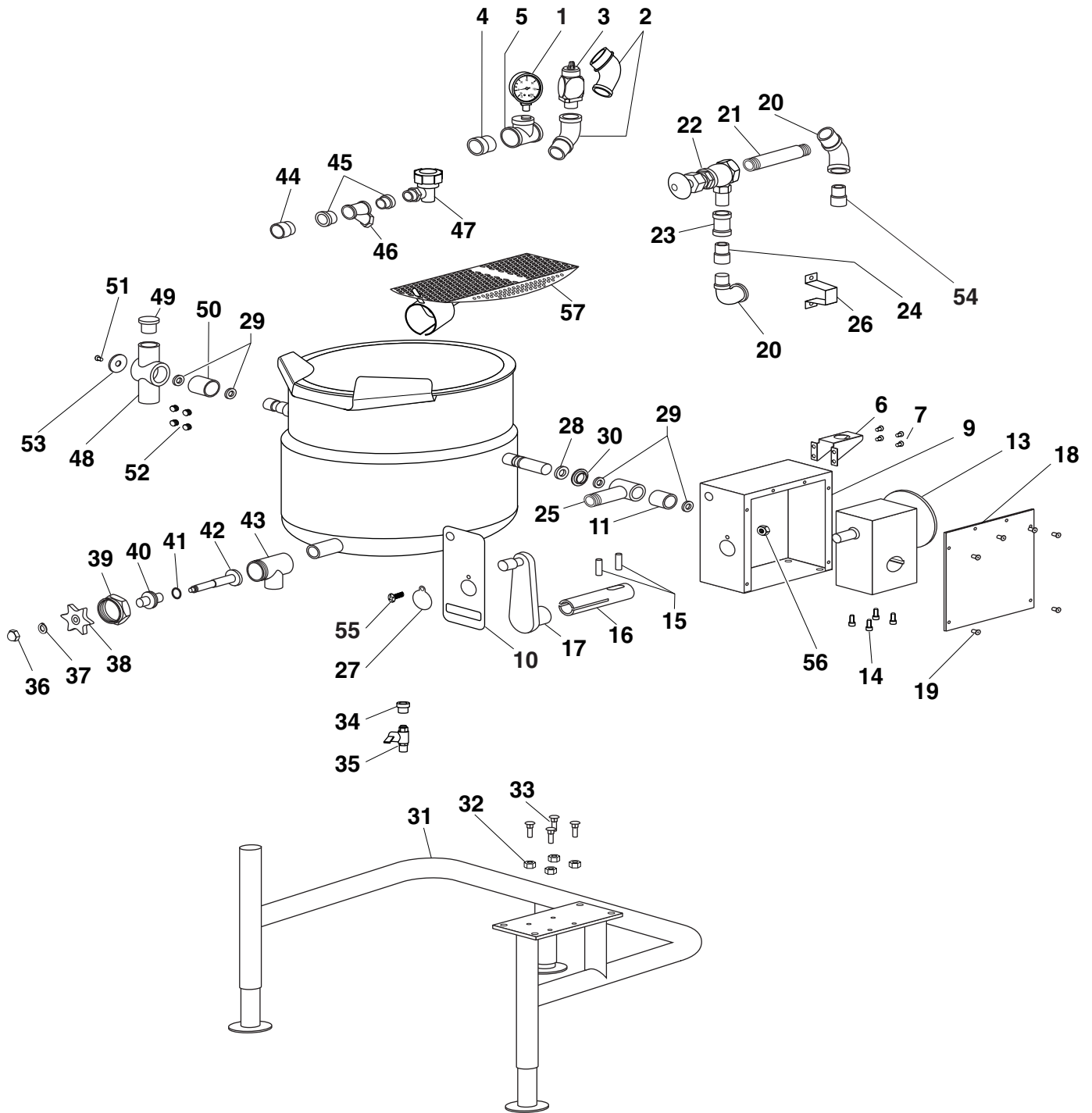


Figure 2

K20DLT, K40DTL, AND K60DLT COMPLETE ASSEMBLY PARTS LIST

Fig. 2

Item No.	Part No.	Description	Amt
1	00-855954-00001	Gauge, Pressure	1
2	FP-015-17	Elbow, Pipe 1/2 X 90 Degree Street	2
3	00-855968-00001	Valve, Relief	1
4	FP-040-42	Pipe, 1/2 X 1.125	1
5	FP-069-06	Tee, Pipe 1/2 X 1/2 X 1/4	1
6	00-855902-00001	Plate, Faucet Mounting	1
7	SC-041-50	Screw, Cap 1/4-20 X 1/2 Hex	4
8	00-854766-00001	Speed Nut, J Type-1024	8
9	00-856347-00001	Assembly, Control Box	1
10	00-856586-00001	Overlay, KxxDLT	1
11	00-856315-00001	Bushing, Bronze Sleeve	1
12	00-856379-00001	Shaft, Pivot	1
13	00-856184-00002	Gear Reducer, 80:1	1
14	SC-041-50	Screw, Cap 1/4-20	4
15	RP-003-36	Pin, Roll .312 X 1.500	2
16	00-856644-00002	Extension, Reducer Shaft	1
17	00-854650-00001	Assembly, Crank Handle	1
18	00-856011-00001	Assembly, Control Box Lid with Seals	1
19	SC-066-06	Screw, Machine 10-24 X 1/2 Truss Cross	6
20	FP-015-23	Elbow, Pipe 3/4 X 90 Degree	2
21	FP-091-12	Pipe, 3/4 X 14.250	1
22	00-881984-00001	Valve, Steam	1
23	FP-023-25	Coupling, Pipe	1
24	FP-043-77	Pipe, 3/4 X 4.00	2
25	00-856318-00001	Weldment, Inlet Housing	1
26	00-856587-00001	Bracket, Plumbing Support	1
27	00-856218-00001	Flap, Tilt Handle Opening	1
28	00-856584-00001	Seal, Shaft	1
29	00-856334-00001	Seal, Parker #4207-12501500-250B	4
30	00-856316-00001	Bushing, Steel Sleeve	1
31	00-856306-00001	Assembly, Stand, K20DLT	1
	00-856245-00001	Assembly, Stand, K40DLT	1
	00-856172-00001	Assembly, Stand, K60DLT	1
32	NS-015-20	Nut, Hex 1/2 -13 SST	4
33	SC-082-45	Bolt, Square Neck, 1/2-20 UNF X 1.750 L	4
34	FP-027-16	Bushing, Pipe 3/4 X 3/8	1
35	00-856325-00001	Valve, Drain	1
36	00-856213-00008	Nut, Acorn	1
37	00-856213-00009	Washer, Lock, 2"	1
38	00-856213-00005	Handle, 2"	1
39	00-856213-00004	Nut, Hex, 2"	1
40	00-856213-00006	Retainer, 2"	1
41	00-856213-00007	O-Ring, 2"	1
42	00-856213-00003	Assembly, Disc and Stem, 2"	1
43	00-856213-00002	Body, Valve, 2"	1
44	FP-040-50	Pipe, 1/2 X 2.000	1
45	FP-027-22	Bushing, Pipe 3/4 X 1/2	2
46	00-909459	Strainer	1
47	00-856329-00001	Trap, Thermostatic 125 PSI	1
48	00-856178-00002	Casting, Pivot	1
49	00-856563-00001	Plug, Lid Holder	1
50	00-856349-00001	Bushing, Bronze	1
51	SC-041-11	Screw, Cap 5/16-18 X 3/4 Hex	1
52	SC-047-13	Screw, Set 3/8-16 X 1/2	4
53	00-856182-00001	Washer, Retainer	1
54	FP-46-76	Pipe, 3/4 X 12.750	1
55	SC-066-6	Screw, Mach. 10-24 X 1/2	1
56	NS-011-18	Nut, Mach. Hex 10-24 SST	1
57	00-856192-1	Strainer, Perforated, 20-gallon	1
	00-856186-1	Strainer, Perforated, 40-gallon	1
	00-856195-1	Strainer, Perforated, 60-gallon	1
NS	00-833652-00001	Petro-Gel (Tube)	1
NS	00-856089-00001	Seal, Lid	2
NS	00-856090-00001	Seal, Lid	2

OPTIONAL SPRING ASSIST COVER FOR TILTING KETTLES – EXPLODED VIEW

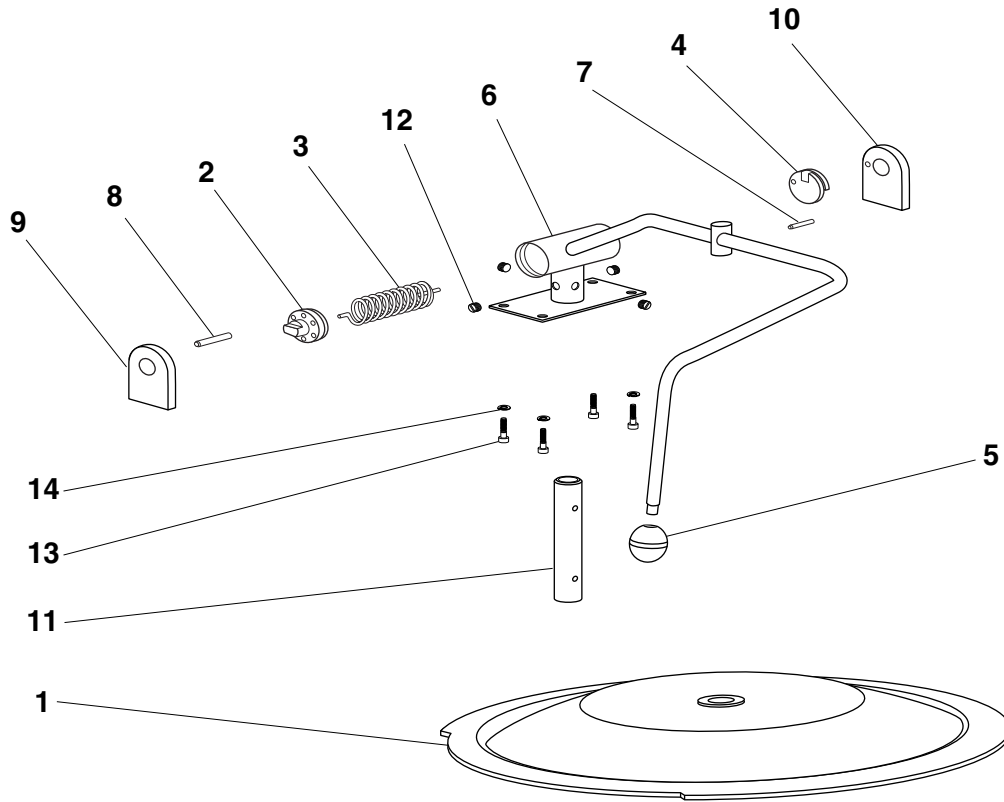


Figure 3

OPTIONAL SPRING ASSIST COVER PARTS LIST

Fig. 3

Item No.	Part No.	Description	Amt
1	00-856490-00005	Assembly, Lid, 20 Gal (with Condensate Ring)	1
	00-856495-00004	Assembly, Lid, 40 Gal (with Condensate Ring)	1
	00-856500-00002	Assembly, Lid, 60 Gal (with Condensate Ring)	1
2	00-853292-1	Disc, Tension Adjustment	1
3	00-853289-1	Torsion Spring	1
4	00-853293-00001	Disc, Rotary Stop	1
5	00-853285-1	Knob, Press-On	1
6	00-856511-00001	Weldment, Handle, 40 Gal, Tilt	1
	00-856514-00001	Weldment, Handle, 60 Gal, Tilt	1
7	RP-004-31	Pin, Roll .250 X 1.0000	1
8	00-853284-1	Pin, Lock	1
9	00-853286-1	Plate, Front	1
10	00-855220-00002	Plate, Rear Weldment	1
11	00-856311-00001	Mast, Support Lid, 5.201" long, K20DLT-1	1
	00-856311-00004	Mast, Support Lid, 8.625" long, K40DLT	1
	00-856311-00005	Mast, Support Lid, 13.250" long, K60DLT	1
12	SC-047-12	Screw, Set, 1/4-20 x 3/8	4
13	SC-110-98	Screw, Cap, 1/4-20 x 3/4 SST	4
14	WL-006-07	Washer, Lock, Helical 10	4

2" DRAW-OFF VALVE

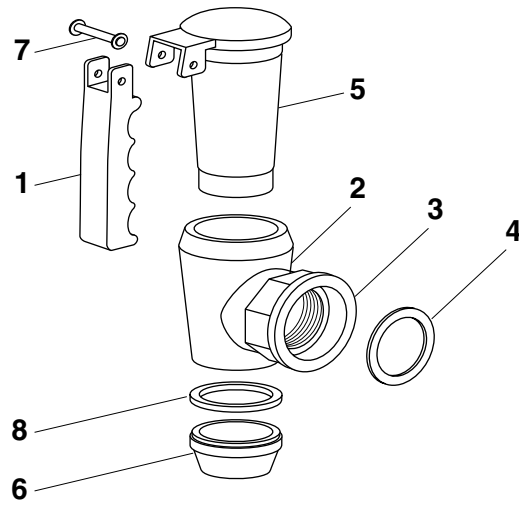


Figure 4

Item No.	Part No.	Description	Amt
1	00-857547-00006	Athermic Handle	1
2	00-857547-00002	Draw-Off Valve Body	1
3	00-857547-00003	Draw-Off Valve Coupling	1
4	00-817170	Draw-Off Valve Coupling Gasket	1
5	00-857547-00004	Draw-Off Valve Plug	1
6	00-857547-00008	Metal Ring	1
7	00-857547-00007	Set, Pin Retaining	1
8	00-857547-00005	Washer	1

3" COMPRESSION VALVE

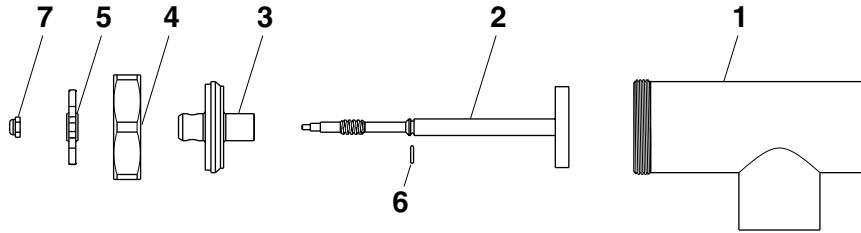


Figure 5

Fig. 5 Item No.	Part No.	Description	Amt
1	00-359996-00001	Valve Body, 3"	1
2	00-359996-00002	Disc and Stem Assembly	1
3	00-359996-00003	Retainer	1
4	00-359996-00004	Hex Nut	1
5	00-359996-00005	Handle	1
6	00-359996-00006	O-ring	1
7	00-359996-00007	Nut	1

